

The new MB 2K

The winner takes it all





Remmers MB 2K

Improved formulation

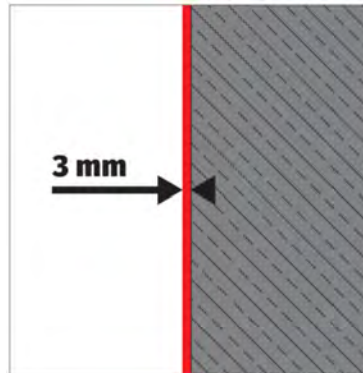
The new MB 2K is the next generation of multi-functional building waterproofing from Remmers. Boasting unbeatable crack bridging at low coating thicknesses and extremely quick drying times, the material is now also easier to apply than ever before – and of course, this all-rounder still has the same tried-and-trusted properties as ever.

- Application rate approx. 1.1 kg/m² per mm dry layer thickness
- Highly flexible and resilient
- High adhesive pull strength on virtually all substrates
- Extreme pressure resistance – three times as dimensionally stable as required
- Impervious to radon
- Can be overcoated
- UV-resistant
- Freeze/thaw-resistant



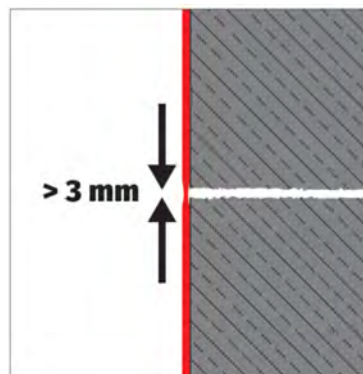
The 3 x 3 of perfect building waterproofing

Safety



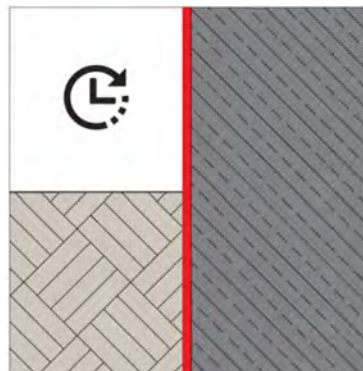
Layer thickness only 3 mm up to 3 m immersion depth without reinforcement

No matter what the application, 3 mm is enough. Even when waterproofing components in contact with the ground to protect them against pressing water, just one application of MB 2K with a dry layer thickness of 3 mm is required – without the need for fabric reinforcement.



Tested crack bridging of more than 3 mm without reinforcement

In practical terms, crack-bridging capability means safety. With crack bridging of more than 3 mm, MB 2K is more flexible than conventional waterproofing systems, meaning that even areas subjected to high stresses can be permanently and securely waterproofed.



Soil can be back filled after 9 hours¹, always set after 18 hours²

With MB 2K, you save time as well as material. Thanks to its unique special formulation, MB 2K dries and cross-links incredibly quickly. In a standard climate, the soil can be back filled after just 9 hours.

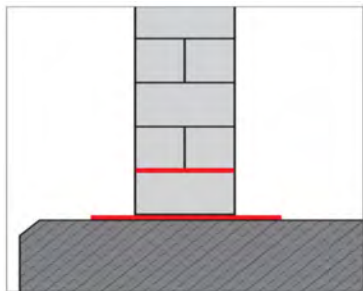
¹ Standard climate (23°C / 50% RH) ² Refrigerated climate (5°C / 90% RH)

Fully checked!

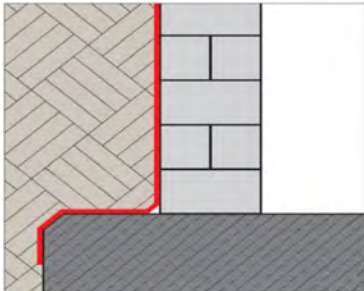
The MB 2K offers fully tested safety to the highest level. No matter where you use this waterproofing product, we have the appropriate test certificates and proof of usability.

Visit www.remmers.co.uk to see an overview of test certificates and other related documents.

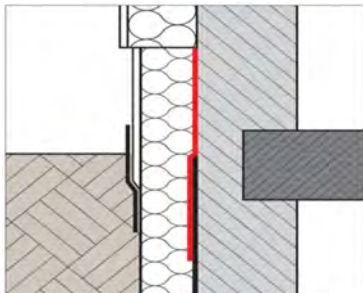
Versatility +



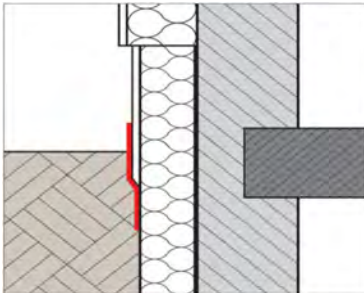
Waterproofing in and underneath walls



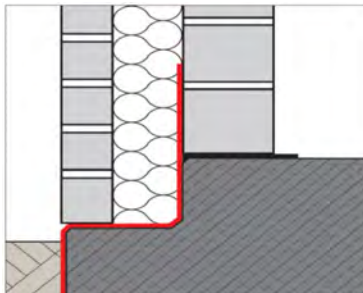
External waterproofing against the ground



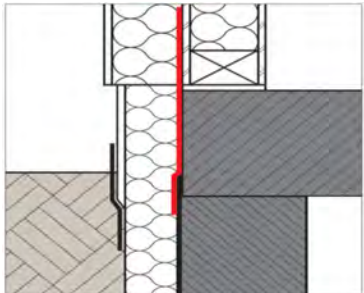
Plinth waterproofing



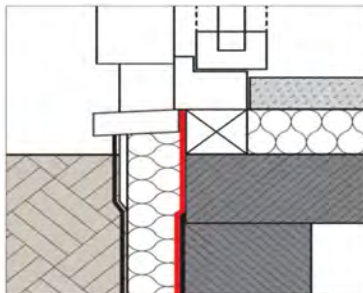
Render waterproofing



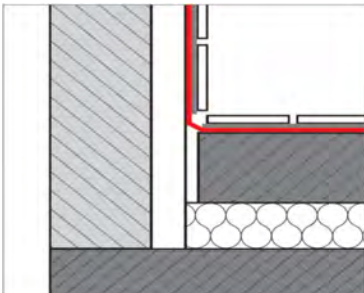
Base point waterproofing of facing brickwork



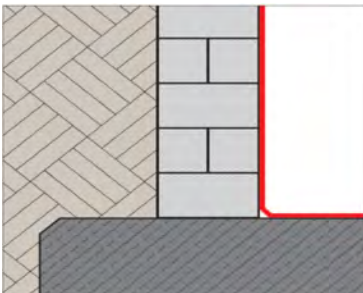
Plinth waterproofing in timber frame construction



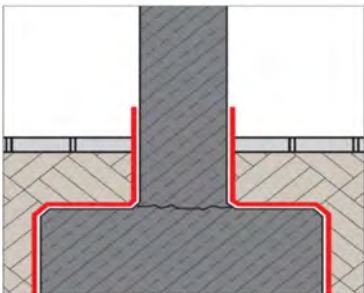
Waterproofing of floor-to-ceiling windows



Tile and panel composite waterproofing



Subsequent interior waterproofing



Waterproofing of column footing

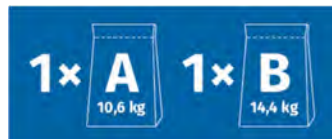


Efficiency +

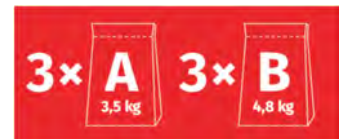
Grout, filling and spraying

Remmers MB 2K is a multi-functional wonder when it comes to processing too. When applying by hand, the user can opt to work with the material as a grout, or apply it using a trowel or even a roller. On transition areas that are difficult to reach and on small surface areas, such as wall positioning areas and plinths, applying as a slurry has proven effective. On larger surfaces, we recommend applying with a trowel. Low wastage and high stability of the material ensure high surface coverage. It is especially effective to apply Remmers MB 2K by spraying. When using machine technology suitable for the

construction site, spray application is an efficient alternative to manual methods for surfaces starting from just 40 to 50 m². Thanks to the new 1 : 1 pre-packaging of Remmers MB 2K, significant amounts of time can be saved on site – which means major efficiency gains too.



For use on large areas



For use on small areas

